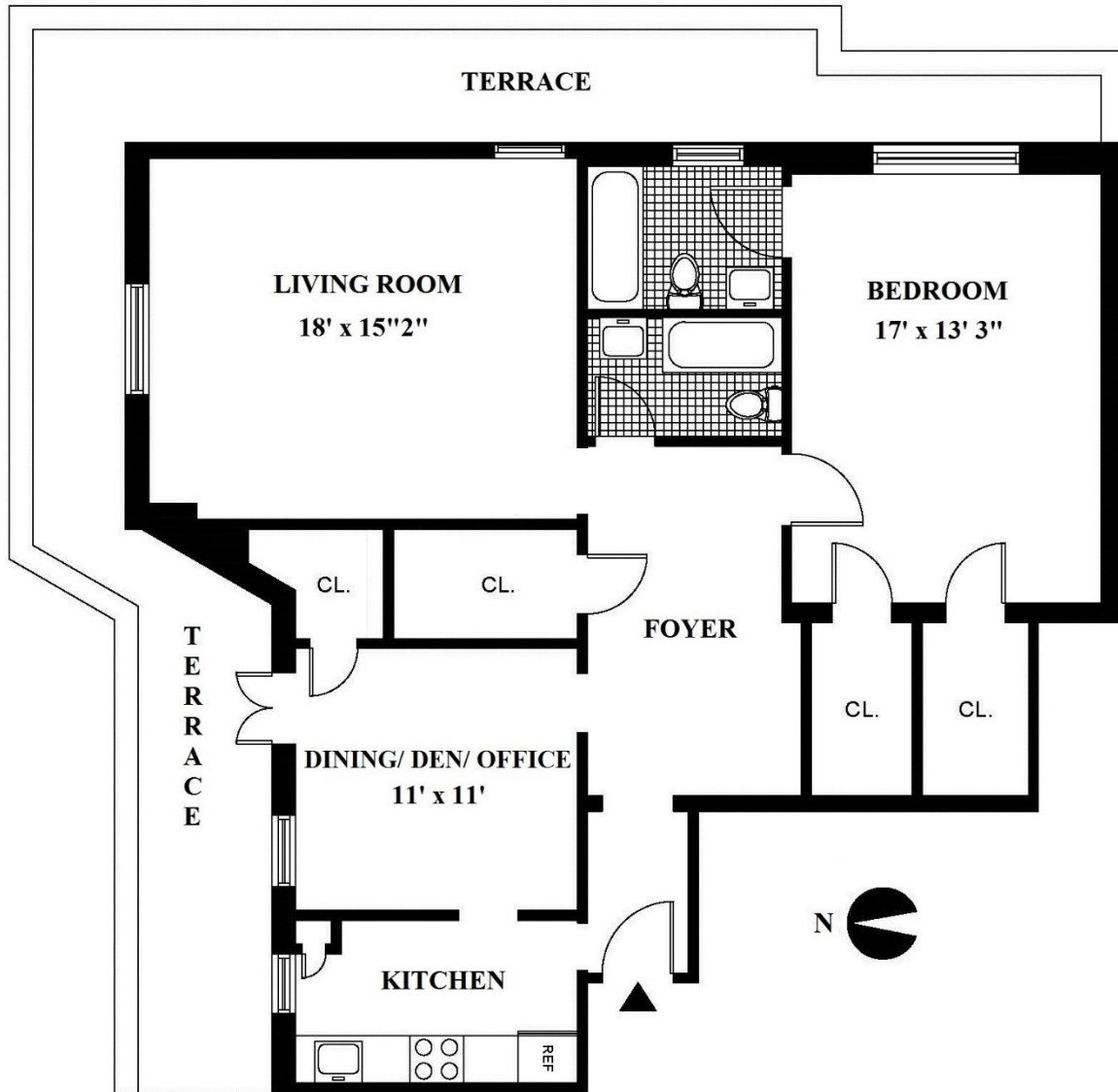




SOUTHGATE | 414 EAST 52nd STREET PHA | FLEXIBLE 2 BED, 2 BATHS - TERRACE

PRICE: \$1,225,000

MAINTENANCE: \$4,054.47 includes electricity | monthly assessment \$516.75 thru 4/27



NO BOARD APPROVAL

For more information, please contact: Classic Marketing Sales Gallery
530 Park Avenue at 61st Street | 212-371-0530 | sales@classicnyapts.com
www.classicmktg.com

This is not an offering. The complete terms of the offer are in an offering plan available from the Sponsor. All dimensions are approximate. The information contained herein is intended for information purposes only and should be verified by your own real estate professionals. All information is believed to be correct but is not guaranteed accurate and is subject to change or withdrawal without notice.

